



Residential Charging Station

Wall Mount AC Charger

Product Features

- › Compatible 7/11/22kW
- › Reservation charging/schedule charging, resume charging after fault recovered
- › With smart temperature sensor, adjust run-time power
- › Low power consumption, environmental protection
- › IP55
- › OTA upgrade, Dialog and Troubleshooting
- › Smart lamp signals

Main function

- QR-code/BLE/Card/Plug and Charge
- 3.5/4.3 inch color LCD (Optional)
 - Smart charging
- With 30mA Type A RCD + 6mA DC detector
 - OCPP 1.6J/2.0J (Optional)
 - BLE+ Eth/ Wi-Fi/ 4G (Optional)

Scenario

Designed for public parking lots, commercial buildings, community properties and household which have the requirement of EV charger, support wall mounted and floor mounted installation.



Main Performance and Characteristics

Parameters	Model	CL5434-A07B	CL5434-A11A	CL5434-A22A
Input	Power supply	P+N+PE	3P+N+PE	
	Voltage	200~260V	360~440V	
	Current	32A	16A	32A
	Frequency	45~65Hz		
Output	Voltage	200~260V	360~440V	
	Max current	32A	16A	32A
	Rated power	7kW	11kW	22kW
User interface	Charge plug	Type 1/ Type 2		
	Cable length	5 meter (include connector)		
	Enclosure	Plastic		
	LED indicator	Green/Yellow/Blue/Red		
	LCD display	3.5"/4.3" color LCD (Optional)		
	RFID card reader	Non-contact (ISO/IEC14443 A)		
	Start method	Card/QR code/ BLE/ Plug and Charge		
Communication	Local interface	BLE 5.0,RS 485		
	Uplink interface	Ethernet/4G/ Wi-Fi (Optional)		
	Protocol	OCPP1.6J/2.0J(Optional)		
Safety	RCD	30mA TypeA+6mA DC		
	Emergency stop	Yes		
	Protection grade	IP55		
	Anti-collision grade	IK08		
	Certification	CE, CB		
	Standard	EN/IEC 61851-1:2017		
Working environment	Installation	Wall mounted/ Ground standing (Optional with pedestal)		
	Working temperature	-25℃~55℃ (with LCD)		
		-30℃~55℃ (without LCD)		
	Working humidity	5%~95% (Non-condensation)		
	Storage temperature	-40℃~70℃		
Package	Altitude	≤2000m		
	Product size	218*109*404mm(W*D*H)		
	Package size	517*432*207mm(L*W*H)		
	Net weight	2.8kg	3.7kg	4.9kg
	Gross weight	3.8 kg	4.7kg	5.9kg
Others	Packaging material	Carton box		
	Warranty	2 years		



Electric Vehicle Charger

20kW DC Charger

Product Features

- › Programmable charging mode
- › Comprehensive protection
- › Multiple communication modes
- › 4.3 inch touch screen
- › European standard
- › Flexible installation



Main Performance and Characteristics

Model	EVD-20S
Input voltage	320~475V AC
Rated input voltage	400V AC
Frequency	50/60 Hz
DC plug type	CSS Type 2
Output voltage range	CCS (150~1000V)
Max. output power	20kW
Max. output current	50A
Voltage accuracy	<±0.5%
Current accuracy	≤±1% (at 20%~100% of rated power)
Voltage-regulating accuracy	<±0.5%
Current-regulating accuracy	<±1%
Ripple coefficient	RMS: ±0.5%; Peak: <±1%
Meeting accuracy	0.5%
Efficiency	≥94%
Cable length	5m
Protection	Over voltage protection, under voltage protection, overload protection, over-temp protection, emergency protection
Display	4.3 inch screen/ Opt
Ethernet/ Wifi/ 4G	Yes/ Yes/ Opt
Charging mode	APP/ RFID (opt)/ Plug and Charge
Indicator	Yes
Emergency stop	Yes
Protection degree	IP54
Operating temperature	-25°C ~+50°C
Relative humidity	0%~95% non-condensing
Maximum altitude	2000m
Cooling	Forced air cooling
Standby power consumption	<30W
Noise emission	<65dB
Dimension	450*670*206 mm (W*H*D)
Weight	50kg
Certificate	CE RCM



Electric Vehicle Charger

22kW AC Charger

Product Features

- › Compatible 22kW
- › Resume charging after fault recovered
- › Support online operation and payment
- › With smart temperature sensor, adjust run-time power
- › OTA upgrade, Dialog and Troubleshooting
- › Compatible plug type and socket type

Main function

- QR-code/BLE/Card/Plug and Charge
 - 3.5 inch color LCD
- With 30mA Type A RCD + 6mA DC detector
 - OCPP 1.6J/2.0J (Optional)
 - MID Certification
- Ethernet/4G/Wi-Fi/BLE

Scenario

Designed for public parking lots and commercial buildings, apartment buildings, office buildings where the requirement of EV AC charger have.



Main Performance and Characteristics

Parameters	Model	T-Power 22KW		
Input	Power supply	3P+N+PE		
	Voltage	400VAC±15%		
	Current	32A		
	Frequency	45~65Hz		
Output	Voltage	400VAC		
	Max current	32A		
	Rated power	22kW		
User interface	Charge plug	Type2		
	Cable length	5 meter (include connector)		
	Enclosure	Galvanized steel		
	LED indicator	Green/Yellow/Red		
	LCD display	3.5" LCD		
	RFID card reader	Non-contact (ISO/IEC14443 A)		
	Start method	Card/QR code/Plug and Charge		
	Emergency stop	Yes		
	Communication	Communication Interface	Ethernet/4G/WIFI/BLE (Optional)	
Protocol		OCPP1.6J/2.0J(Optional)		
Safety	Energy Meter	MID		
	RCD	30mA TypeA+6mA DC		
	Protection grade	IP54		
	Anti-collision grade	IK10		
	Electrical protection	Over-current, Leakage, Short Circuit, Grounding, Lightning, Under-voltage, Over-voltage and Over-temperature		
	Certification	CE		
	Standard	EN/IEC 61851-1		
Working environment	Installation	Wall mounted/ Ground standing (Optional with pedestal)		
	Working temperature	-25℃~55℃ (with LCD)		
	Working humidity	5%~95% (Non-condensation)		
	Storage temperature	-40℃~+70℃		
	Altitude	≤2000m		
Package	Product size	320*173*490mm(W*D*H)		
	Package size	666*496*227mm(L*W*H)		
	Net weight	11kg	11.5kg	13kg
	Gross weight	12kg	12.5kg	13.5kg
	Packaging material	Carton box		
Others	Warranty	5 years		



Electric Vehicle Charger

40kW DC Charger

Product Features

- › Programmable charging mode
- › Comprehensive protection
- › Multiple communication modes
- › 7 inch touch screen
- › EU and JAP standard
- › Dual output ports



Main Performance and Characteristics

Model	EVD-40D
Input voltage	320~475V AC
Rated input voltage	400V AC
Frequency	50/60 Hz
DC plug type	CSS Type 2 (default), CHAdeMO (opt), double plugs
Output voltage range	CCS (150~1000V), CHAdeMO (150~500V)
Max. output power	40kW
Max. output current	CCS 100A, CHAdeMO 125A
Voltage accuracy	<±0.5%
Current accuracy	≤±1% (at 20%~100% of rated power)
Voltage-regulating accuracy	<±0.5%
Current-regulating accuracy	<±1%
Ripple coefficient	RMS: ±0.5%; Peak: <±1%
Meeting accuracy	0.5%
Efficiency	≥94%
Cable length	5m
Protection	Over voltage protection, under voltage protection, overload protection, earth leakage protection, over-temp protection, short circuit protection, lightning protection
Display	7 inch screen/ Opt
Ethernet/ Wifi/ 4G	Yes/ Yes/ Opt
Charging mode	APP/ RFID (opt)/ Plug and Charge
Indicator	Yes
Emergency stop	Yes
Protection degree	IP54
Operating temperature	-25°C ~+50°C
Relative humidity	5%~95% non-condensing
Maximum altitude	2000m
Cooling	Forced air cooling
Standby power consumption	<30W
Noise emission	<65dB
Dimension	532*858*300 mm (W*H*D)
Weight	84kg
Certificate	CE RCM



Electric Vehicle Charger

3.3kW AC Charger

Product Features

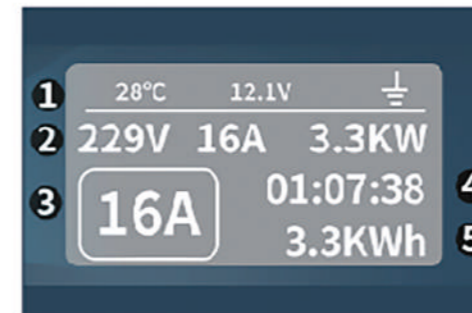
- › Compact design
- › One-click switch of 4 levels of power: 8A/10A/13A/16A
- › Small display with light indicator
- › Reserve charging for 1 to 10 hours



Main Performance and Characteristics

Rated AC operating voltage	220±20%V AC
Rated AC operating current	16A
Operating frequency	47-63Hz
Residual current rated operating current	M22mA
Duty ratio	26.67%@1kHz
Working temperature	-30°C to +55°C
Operating humidity range	3 to 95% RH
Storage temperature range	-50°C to 85°C
Elevation	Less than 2000m
Flame retardant rating	UL94V0
Protection function	Overvoltage protection; Undervoltage protection; Overcurrent protection; Electricity leakage protection; Grounding protection; Continuous monitoring of grounding protection; Lightning protection; Over-temperature protection; Power regulation 8A, 10A, 13A, 16A (touch adjustment)

Display analysis



1. 28°C real-time temperature display; 12.1V single voltage; Ground line display.
2. 229V power supply voltage; 16A charging current; 3.3kW single cumulative charging degree.
3. 16A charging current is selected.
4. 01:07:38 single cumulative charging time.
5. 3.3kWh: average hourly charging degree.



Electric Vehicle Charging Cable

5m EV Charging Cable

Product Features

- › 3-phase 22kW (max) 5-meter charging cable
- › European standard 7-hole connector
- › Compact design with storage bag
- › Support intelligent security lock function and smart temperature control
- › Made of highly flame-retardant and high strength material, secure and durable



Main Performance and Characteristics

Type 2 to Type 2 EC Charging Cable with rubber cover and storage bag. Compatible for all Electric Vehicles and Plug In Hybrid Electric Vehicles that use a Type 2 charging connector.

Colour	Black + White
Material	ABS Plastic + Rubber
Connector Standard	IEC 62752-2016 Type 2
Input Voltage	AC 230V \pm 10%
Charging Rate	22kW
Output Current	32A
Number of Phases	3
Operating Temperature	-40°C to +50°C
Net Weight	3.18kg



Plug into the VEHICLE



Plug into the CHARGER



Dust-proof cover

Ergonomic design handle:
Angled horizontal bending design in line with the habit of manual force

Thicker oxygen-free pure copper core cable



Commercial EV Charger

30~60kW Portable DC Charger

Product Features

- › Portable and movable
- › Average efficiency $\geq 96\%$ at nominal output power
- › Ethernet/3G/4G/OCPP communication
- › High protection grade as IP54
- › APP operation or RFID authentication or plug and play

Scenario



Main Performance and Characteristics

Model	30kW	60kW
Phases/Lines	3 phases+neutral+PE	
Voltage	380VAC $\pm 20\%$	
Frequency	50Hz $\pm 10\%$	
Power	30	60
Voltage	200-1000VDC	
Current (max.)	CCS 2 200A ,CHAdEMO 125A,GB/T 250A	
Cable Length	5m	
Connector	CCS 2 or CHAdEMO or GB/T, Up to 2 charging guns	
Power Factor	≥ 0.99	
THD Value	$\leq 5\%$	
Stable Voltage Accuracy	$\leq \pm 0.5\%$	
Stable Current Accuracy	$\leq \pm 1\%$	
Efficiency	$\geq 96\%$ at nominal output power	
Housing Material	Galvanized steel	
Installation Method	Portable	
LED Indicator	7 inches	
Emergency Stop Button	Mushroom headed type	
Payment Method	RFID CARD	
External	Ethernet, and 3G/4G	
Communication Protocol	OCPP1.6J	
Working Temperature	-30°C - $+55^{\circ}\text{C}$	
Working Altitude	$\leq 2000\text{M}$	
Application Site	Indoor/Outdoor	
Cooling Method	Forced air cool	
Multiple Protection	Over Current, Under Current, Over Voltage, Residual Current, Surge Protection, Short Circuit, Earth Fault at input and output, Input Phase reversal, Emergency Shutdown with alarm, over temperature, Protection against electric shock.	
Warranty	1 year	
Product Dimension	650*750*1000mm(W*D*H)	
Net Weight	60/80KG	
External Packing	Wooden case	



Commercial EV Charger

60~120kW DC Charger

Product Features

- › Constant power from 50~1000VDC
- › Average efficiency $\geq 96\%$ at nominal output power
- › One charger with two outputs, simultaneously charging
- › Ethernet/4G/OCPP communication
- › High protection grade as IP54
- › CE certificate



Main Performance and Characteristics

Model	60kW	80kW	100kW	120kW
Phases/Lines	3 phases+neutral+PE			
Input Voltage	380VAC $\pm 20\%$			
Frequency	50Hz $\pm 10\%$			
Power	60	80	100	120
Output Voltage	50-1000VDC			
Current (max.)	CCS 2 200A			
Cable Length	5m			
Connector	CCS 2*2			
Power Factor	0.99			
Voltage stabilisation Accuracy	$\leq \pm 0.5\%$			
Current stabilisation Accuracy	$\leq \pm 1\%$			
Efficiency (peak value)	$\geq 96\%$			
Insulation Resistance	$\geq 10M$			
Insulation Strength	Output to ground, input to ground, input to output 3.5kV DC applied, 1min without arc and flashover			
Relative Humidity	95% (no condensation)			
Protection Level	IP54			
Payment Method	10 (it can withstand severe impact of 20J energy mechanical impact test)			
RFID Reader	Included			
Connection With Back Office	Ethernet/GPRS/4G			
Communication Protocol	OCPP1.6J			
Operation Temperature	$-20^{\circ}C \sim +70^{\circ}C$			
Working Altitude	$\leq 2000M$			
Start-up Delay	2~4S			
Cooling Method	Forced air cool			
Multiple Protection	Over Current, Under Current, Over Voltage, Residual Current, Surge Protection, Short Circuit, Earth Fault at input and output, Input Phase reversal, Emergency Shutdown with alarm, over temperature, Protection against electric shock.			
Warranty	1 year			
Product Dimension	700*400*1870mm(W*D*H)			
Net Weight	200KG			
External Packing	Wooden case			



Commercial EV Charger

60~180kW DC Charger

Product Features

- › 300-1000V constant output power
- › Plug lock protection
- › Smart power distribution, single module fault will not affect others
- › AC/DC integrated, charge plug can be configured as required
- › Reservation charging, schedule charging
- › Real time power regulation with smart temperature sensor
- › OTA upgrade, dialog and troubleshooting

Main function

- QR-code/BLE/Card/Plug and Charge
- 7 inch color touchable LCD
- With MID/PTB certification
- Multiple protections include Leakage, Over-voltage, Under-voltage, Over-current, Short circuit, Lightning protection, Anti-reverse connection, Emergency stop, Insulation detection, Adhesion detection and others
- OCPP 1.6J/2.0J (Optional)
- Ethernet RJ-45/ 4G



Main Performance and Characteristics

Parameters	Model	CL5830-C08A	CL5830-C08B	CL5830-B08A	CL5830-B08B
Input	Power supply	3P+N+PE			
	Voltage	400VAC±10%			
	Max current	340A			
	Frequency	45~65Hz			
Output	Voltage	CCS2 : 150~1000V DC CHAdeMO : 500V DC Type2 : 360~440V AC			
	Max current	CCS2 : 200A		CHAdeMO : 125A Type2 : 32A	
	Rated power	CCS2: 60~180kW CHAdeMO: 30~60kW Type2: 22kW	CCS2: 60~180kW Type2: 22kW	CCS2: 60~180kW CHAdeMO: 30~60kW	CCS2:60~180kW
User interface	Charge plug	CCS2+CHAdeMO+Type2	CCS2+CCS2+Type2	CCS2+CHAdeMO	CCS2+CCS2
	Cable length	5 meters (Optional)			
	Enclosure	Galvanized Steel			
	LED indicator	Green/Yellow/Red			
	LCD display	7" Color Touchable LCD			
	RFID card reader	Non-contact (ISO/IEC14443 A)			
	POS terminal	Optional			
	Start method	QR-code/ Card/ Plug and Charge			
Communication	Communication Interface	Ethernet/4G			
	Protocol	OCPP1.6J/2.0J(Optional)			
Electrical Performance	Efficiency	≥95% (Half load and above)			
	Power factor	≥0.98(Rated load)			
	Harmonic distortion rate	≤5%(Half load and above)			
	Ripple coefficient	≤1%(Peak to peak)			
Safety	Energy Meter	DC : PTB AC : MID			
	Emergency stop	Yes			
	RCD	Type A			
	Protection grade	IP54 and IK10			
	Electrical protection	Over-current, Leakage, Short Circuit, Grounding, Lightning, Under-voltage, Over-voltage and Over-temperature			
	Certification	CE, CB			
Working environment	Standard	EN/IEC 61851-1, EN/IEC 61851-23, IEC 61851-24, EN/IEC 61851-21-1			
	Installation	Floor mounted			
	Cooling	Fan cooling			
	Noise	≤65dB			
	Temperature range	Working at -25°C~+50°C; Storage at -40°C~+70°C			
	Working humidity	5%~95% (non-condensation)			
Package	Altitude	≤2000m			
	Product size	850*850*1800mm(W*D*H)			
	Package size	1186*966*2034mm(L*W*H)			
	N.W. (exclude module)	324kg	324kg	318kg	318kg
	G.W., (exclude module)	418kg	418kg	412kg	412kg
Packaging material	Wooden box				
Others	Warranty	2 years			



Commercial EV Charger

200~400kW DC Charger

Product Features

- › Constant power from 200-1000V DC
- › Average efficiency $\geq 96\%$ at nominal output power
- › One charger with two outputs, simultaneously charging
- › Ethernet/3G/4G/OCPP communication
- › High protection grade as IP54
- › APP operation/RFID authentication/plug and charge
- › CE certificate NB 1282



Main Performance and Characteristics

Model	200/220/240/260/280/300/400kW
Phases/Lines	3 phases+neutral+PE
Voltage	415VAC $\pm 20\%$
Frequency	50Hz $\pm 10\%$
Power	200-400kW
Voltage	200-1000VDC
Current (max.)	CCS 2 200A ,CHAdeMO 125A,GB/T 250A, Up to two charging guns
Cable Length	5m
Connector	CCS 2 or CHAdeMO or GB/T
Power Factor	≥ 0.99
THD Value	$\leq 5\%$
Stable Voltage Accuracy	$\leq \pm 0.5\%$
Stable Current Accuracy	$\leq \pm 1\%$
Efficiency	$\geq 96\%$ at nominal output power
Housing Material	Galvanized steel
Installation Method	Floor-stand
LED Indicator	7 inches
Emergency Stop Button	Mushroom headed type
Payment Method	RFID CARD
External	Ethernet, and 3G/4G
Communication Protocol	OCPP1.6J
Working Temperature	-30°C-+55°C
Working Altitude	$\leq 2000\text{M}$
Application Site	Indoor/Outdoor
Cooling Method	Forced air cool
Multiple Protection	Over Current, Under Current, Over Voltage, Residual Current, Surge Protection, Short Circuit, Earth Fault at input and output, Input Phase reversal, Emergency Shutdown with alarm, over temperature, Protection against electric shock.
Warranty	1 year
Product Dimension	1400*800*1900mm (W*D*H)
Net Weight	230KG
External Packing	Wooden case

Charging APP

IOS & Android

Product Features

- › Scan QR code to charge
- › Charge by amount of power
- › Users will be notified by SMS when charging is finished (feature available in future update)
- › Penalty will apply if the parking slot is still occupied after 30 minutes (count from the completion of charging process)



T-Power



Scan to download

HOW TO CHARGE YOUR VEHICLE

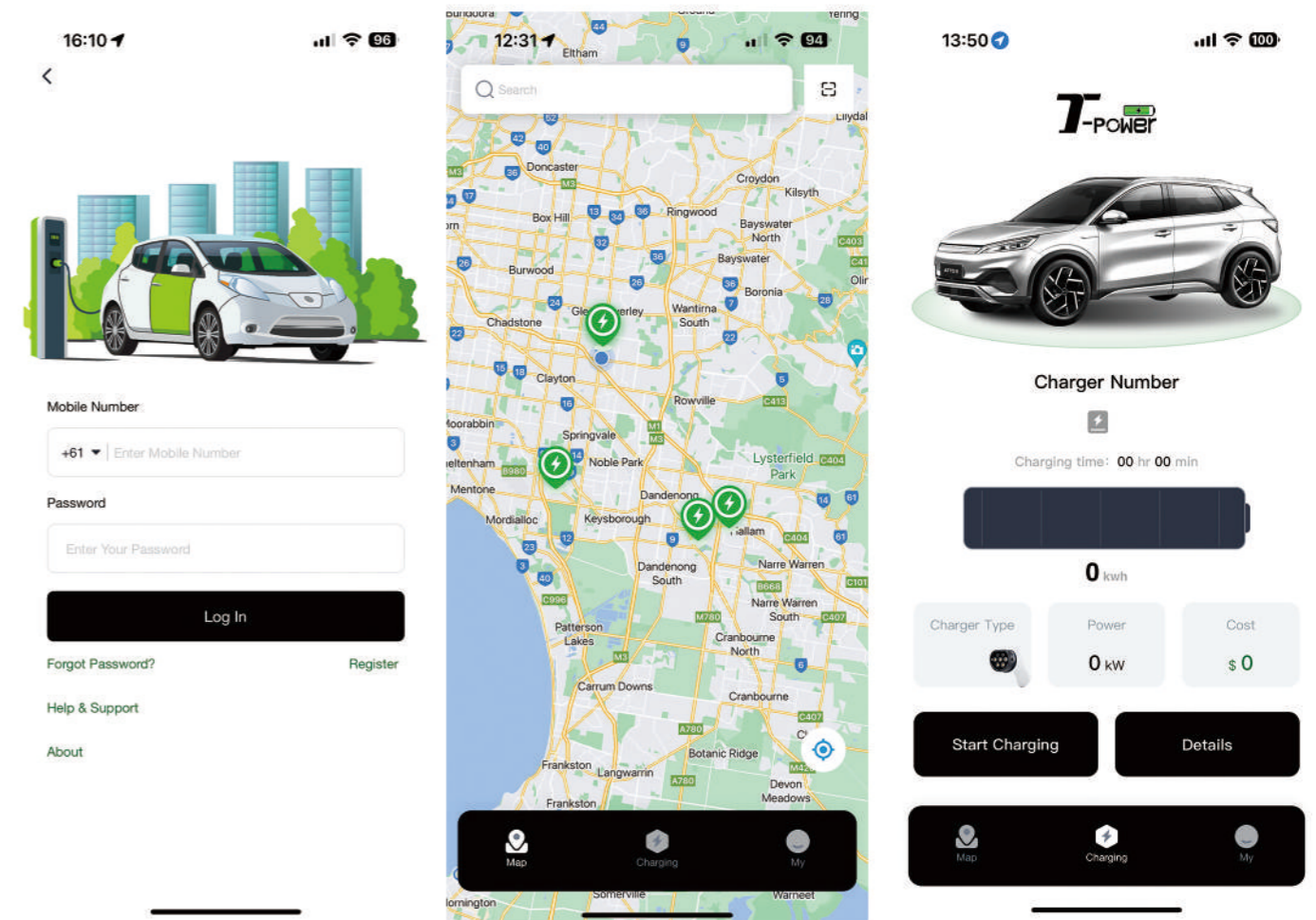
- SCAN the QR code to download the APP or (T-power) in App Store / Google Play
- SIGN UP and enter your credit card details
- FIND the charger on the and see details

Check your registered email address for invoice
- SCAN the Charger QR code displayed ON the charger (not the APP download QR code)
- Start Charging following the instruction in the APP
- STOP CHARGING by tapping
- UNPLUG your vehicle (Some vehicles may need unlocking first)

For customer support call 1300 772 678 or email us info@t-power.com.au
t-power.com.au evc.t-power.com.au

Instructions on how to charge your EV

Platform Overview



Login Interface

Log into your T-Power account using your phone number.

Map Interface

Find/Navigate your nearest T-Power charger.

Click on the icon to see details of the charger such as socket type, charging power, availability, and cost (AUD per kWh).

Charging interface

Display charging status and enabling user to charge or end a charging session.

Invoice send to email at the end of charging session.

TUTORIALS on how to register an account & how to use the APP for charging your EV is available on **T-POWER's LinkedIn**.

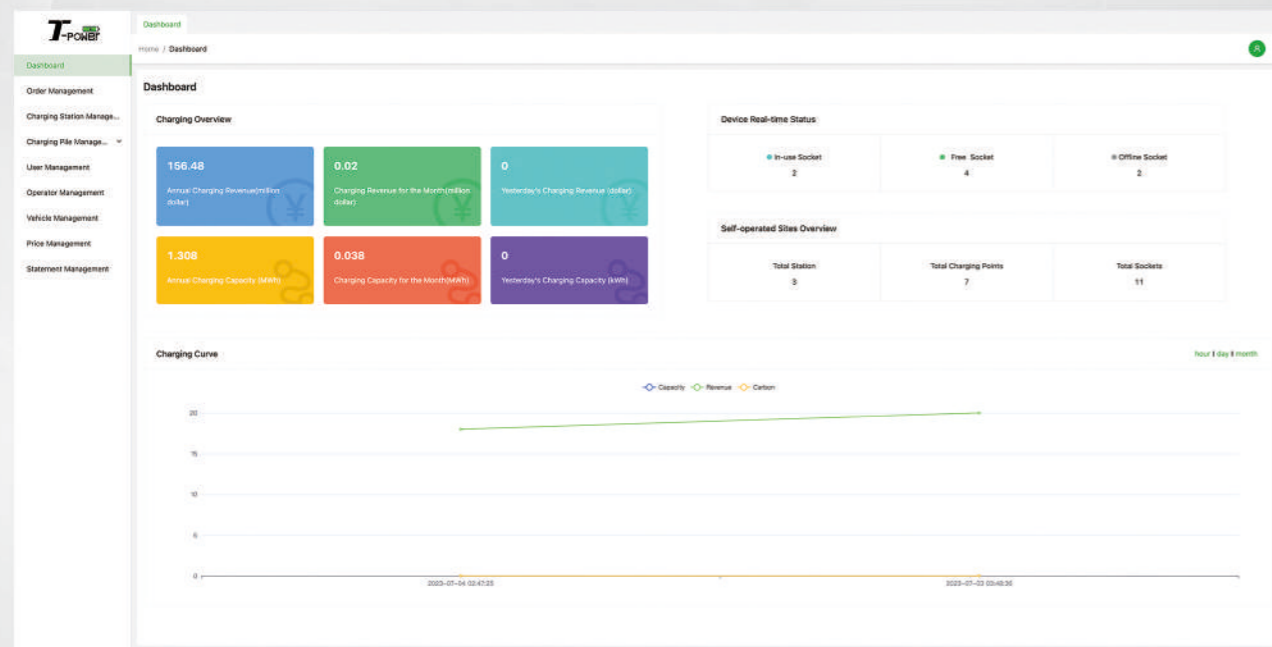
There is **INSTRUCTIONS** on how to charge your EV displayed on **each T-POWER public charger**.

EV Charger Online Management Platform

Product Features

- › Charging station/charging pile/order/user/operator/vehicle/price/statement management.
- › Integration of experience in field station operation, diversified modules analysis. One page to cover all operation-related information, helping enterprises improve revenue and reduce costs.
- › Multi-dimensional security system

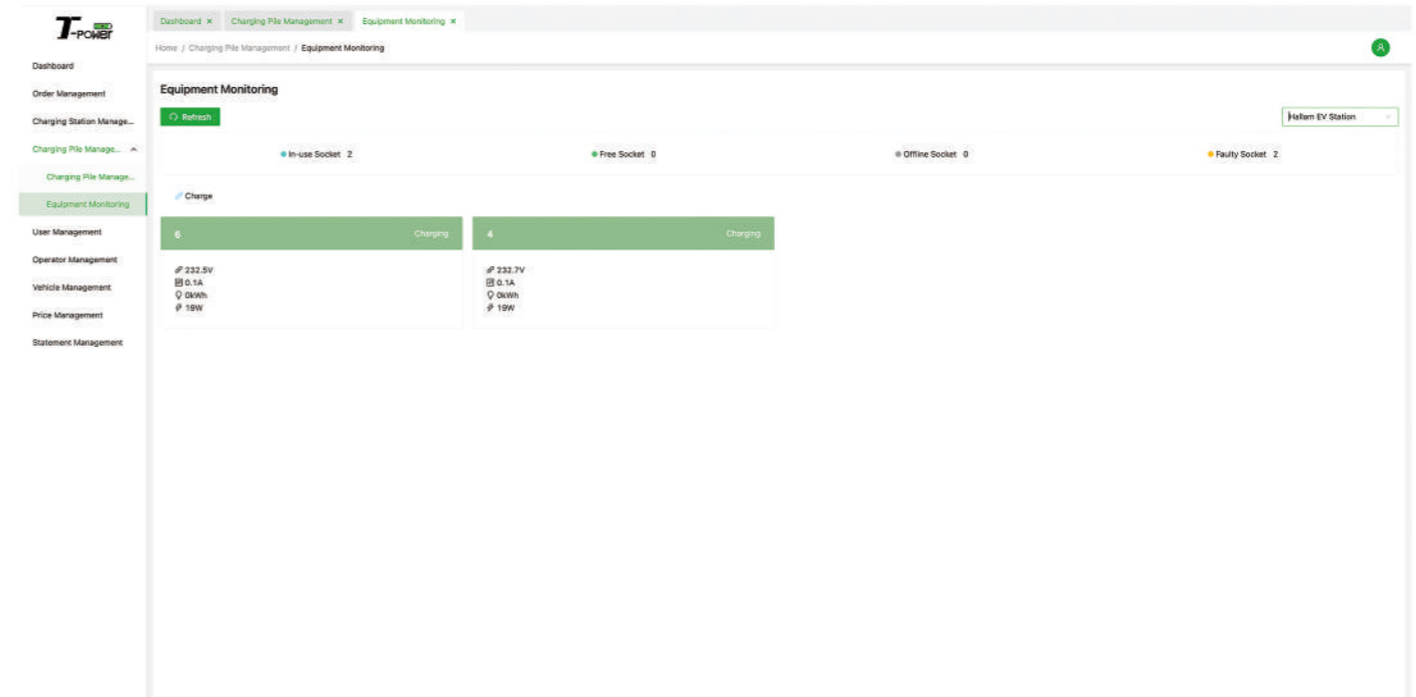
Dashboard Display



Platform Overview

Under Charging Pile Management

1. Equipment Management



2. Load Management

Charging Pile ID	Name	Model	State	SN	Supplier	Power	Charging Pile Connect Number	Max Output Power	Working Status	Operate
12	AC	AC	VC	1000127	asd	0.45	1	22KW	Unavailable	Unavailable modify delete
14	asd	AC	vic	1000126	asd	0.45	1	22KW	Available	Start modify delete
18	1	1	new	1	1	1	1	1	Available	Start modify delete
3	asd	DC	vic	MT0009120	asd	ads	2	120KW	Available	Start modify delete
5	asd	DC	vic	MT0009030	asd	asd	1	30KW	Available	Start modify delete
7	asd	DC	vic	MT0009120	asd	asd	1	120KW	Unavailable	Unavailable modify delete
1	asd	AC	vic	1000001	asd	0.45	1	22KW	Charging	Stop modify delete
6	asd	AC	VC	1000006	asd	asd	5	7KW	Charging	Stop modify delete